

**OFFICE
BUILDING
FOR
LEASE**

**2,500-21,000 Sq.
Ft. Office
Building for Lease**

**301 N. Broadway
De Pere WI 54115**

INTEGRITY, PASSION, RESULTS



**BESAW
& ASSOCIATES
REALTY, LTD.**



**Besaw & Associates
Realty, Ltd.**

Phone: 920-338-8080

Fax: 920-338-8181

Email:

tim@besawrealty.com

**OFFICE
BUILDING
FOR
Lease**

**301 N. Broadway
De Pere WI 54115**

INT

TABLE OF CONTENTS

**2,500-21,000 Sq.
Ft. Office
Building for Lease**

Property Information.....	3
Property Photos.....	4
Building Specifications.....	5
Plat Map.....	6
Floor Plans.....	7-9

**Besaw & Associates
Realty, Ltd.**

Phone: 920-338-8080

Fax: 920-338-8181

Email:

tim@besawrealty.com

301 N. Broadway De Pere WI 54115

INTEGRITY, PASSION, RESULTS

Office Building FOR LEASE

PROPERTY INFORMATION



Besaw & Associates Commercial Division is pleased to offer FOR LEASE this prime Commercial Office Building at 301 N. Broadway in Downtown De Pere. Many options for this office building, ideal use is office space for companies or individuals seeking an ideal location. Possible Build to Suit.

Property Address	301 N. Broadway De Pere, WI 54115 Brown County
Total Square Footage Available	2,500-21,000 Sq. Ft. Up to 14,000 Sq. Ft - 1st fl 3,200 Sq. Ft. - 2nd fl Up to 4,000 Sq Ft - 3rd fl
Lot Size	.52 Acres
Lease Price	\$12.00 per Sq Ft. NNN
Municipality	City of De Pere
Zoning	Commercial
	ED-758-1 \$20,655.09
Parcels and	ED-758 \$20,612.00
Taxes 2020	ED-747 \$1,577.60

**Besaw & Associates
 Realty, Ltd.**

Phone: 920-338-8080

Fax: 920-338-8181

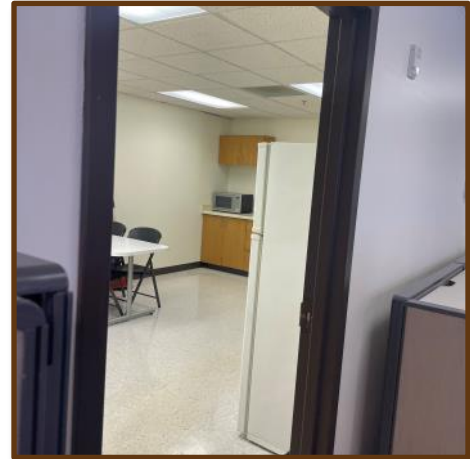
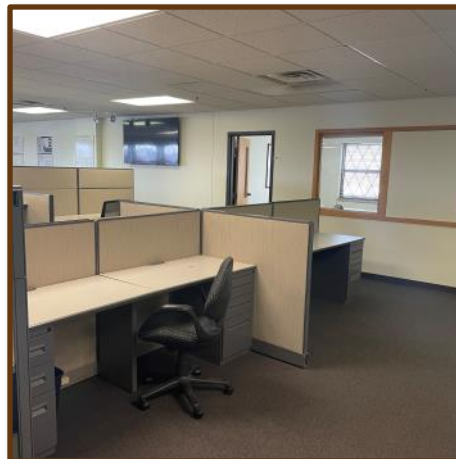
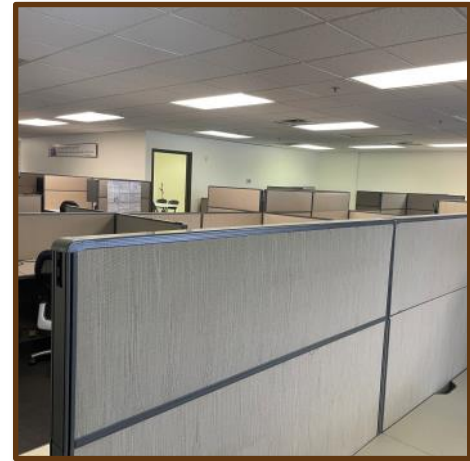
Email:

tim@besawrealty.com

301 N. Broadway
De Pere WI 54115

**Building
Photos**

INTEGRITY, PASSION, RESULTS



**Besaw & Associates
Realty, Ltd.**

Phone: 920-338-8080

Fax: 920-338-8181

Email:

tim@besawrealty.com

BUILDING TYPE OFFICE/BUILD TO SUIT

YEAR BUILT 1988

EXTERIOR CONSTRUCTION MASONARY

PARKING SPOTS 100/ON SITE

SPRINKLER SYSTEM FULLY

HEAT GFA/ZONED

HOT WATER YES

AIR CONDITIONING YES/ZONED

RESTROOM'S 5 SETS

SECURITY SYSTEM FULL/KEY FAB

ELEVATORS 2

VISIBILITY DOWNTOWN

CURRENT TENANTS NORTHWESTERN MUTUAL
MASTER FLEET
MULTIPLAN
DESTREE CPA
MENG FOUNDATION
LIGHT MINDED PEOPLE
EYE AND VISION CLINIC

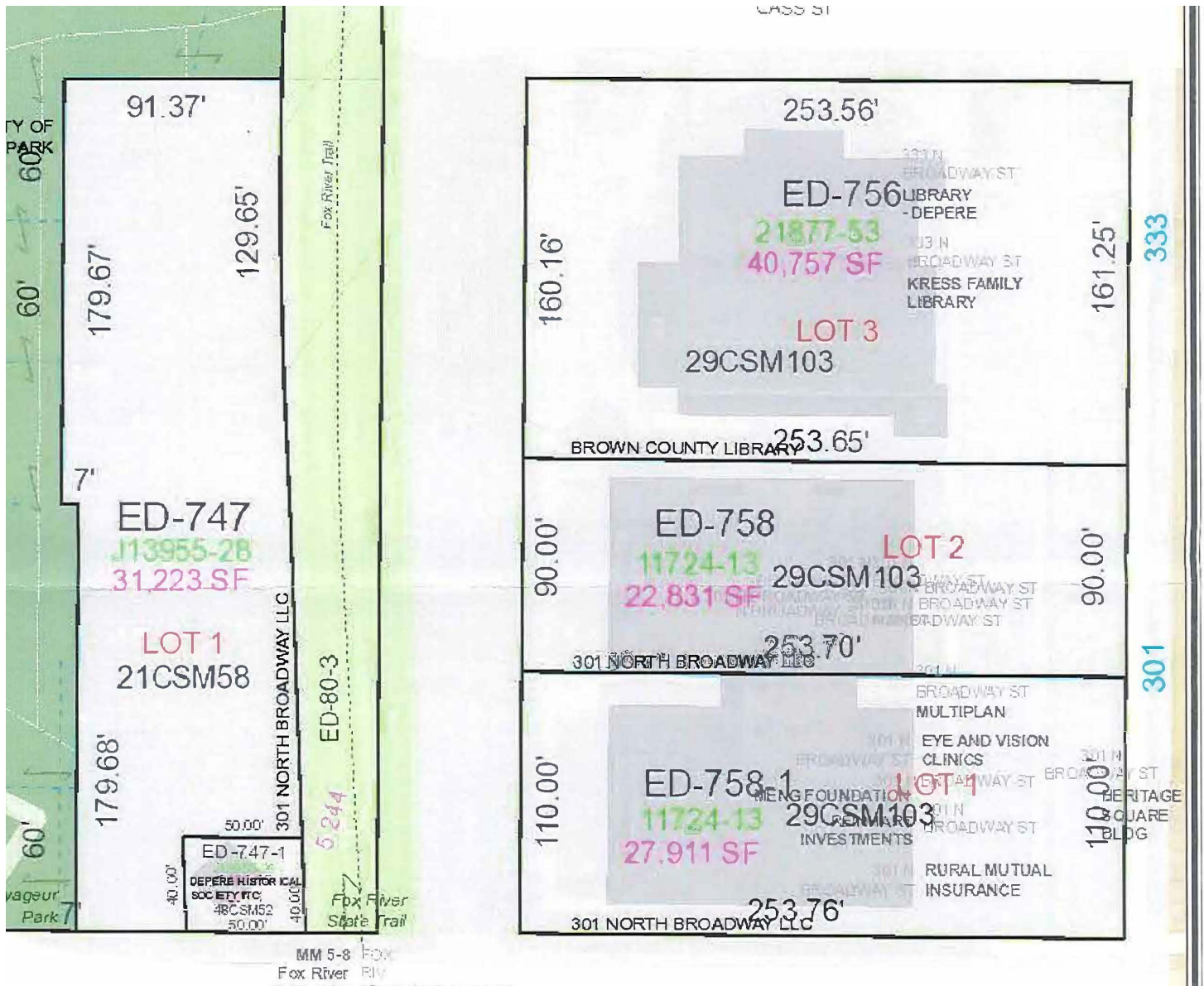
**Besaw & Associates
Realty, Ltd.**

Phone: 920-338-8080

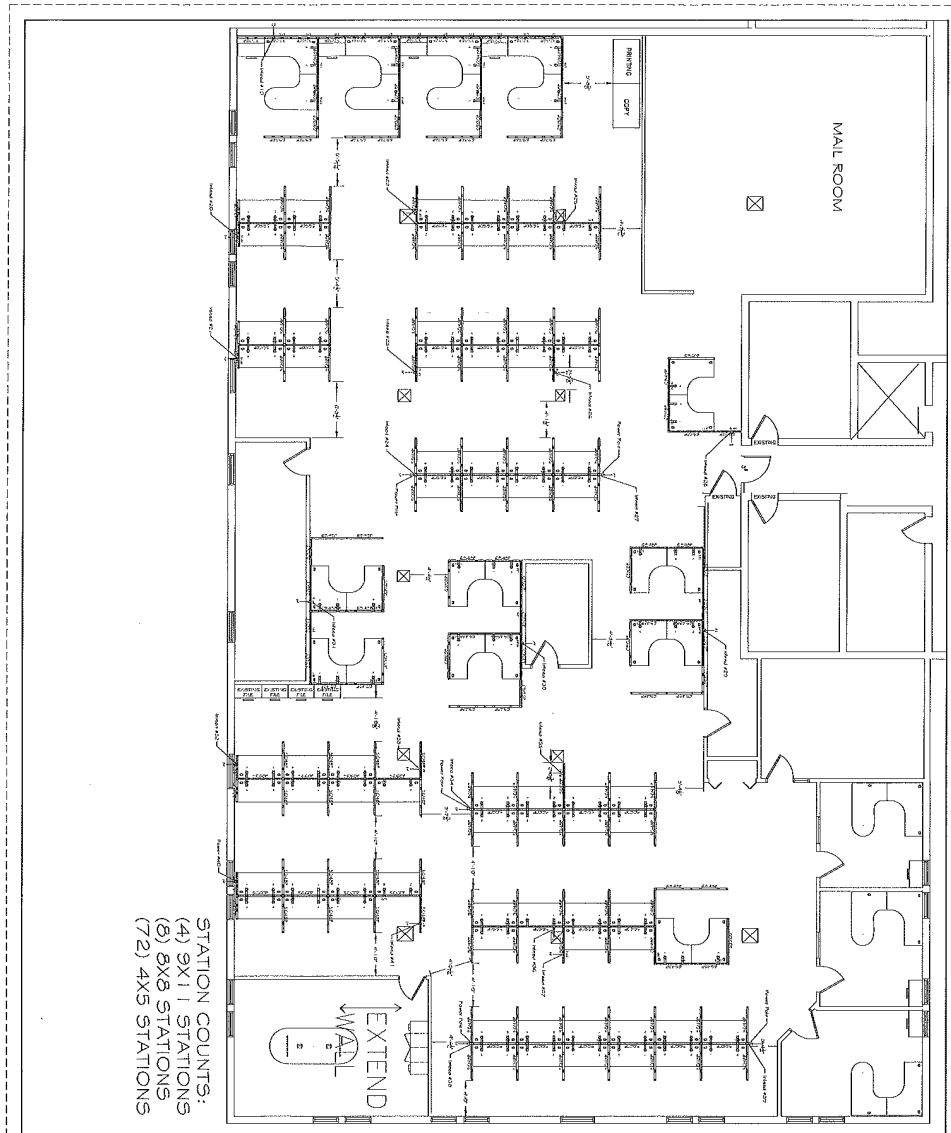
Fax: 920-338-8181

Email:

tim@besawrealty.com



Besaw & Associates
Realty, Ltd.
Phone: 920-338-8080
Fax: 920-338-8181
Email:
tim@besawrealty.com



1st Floor North

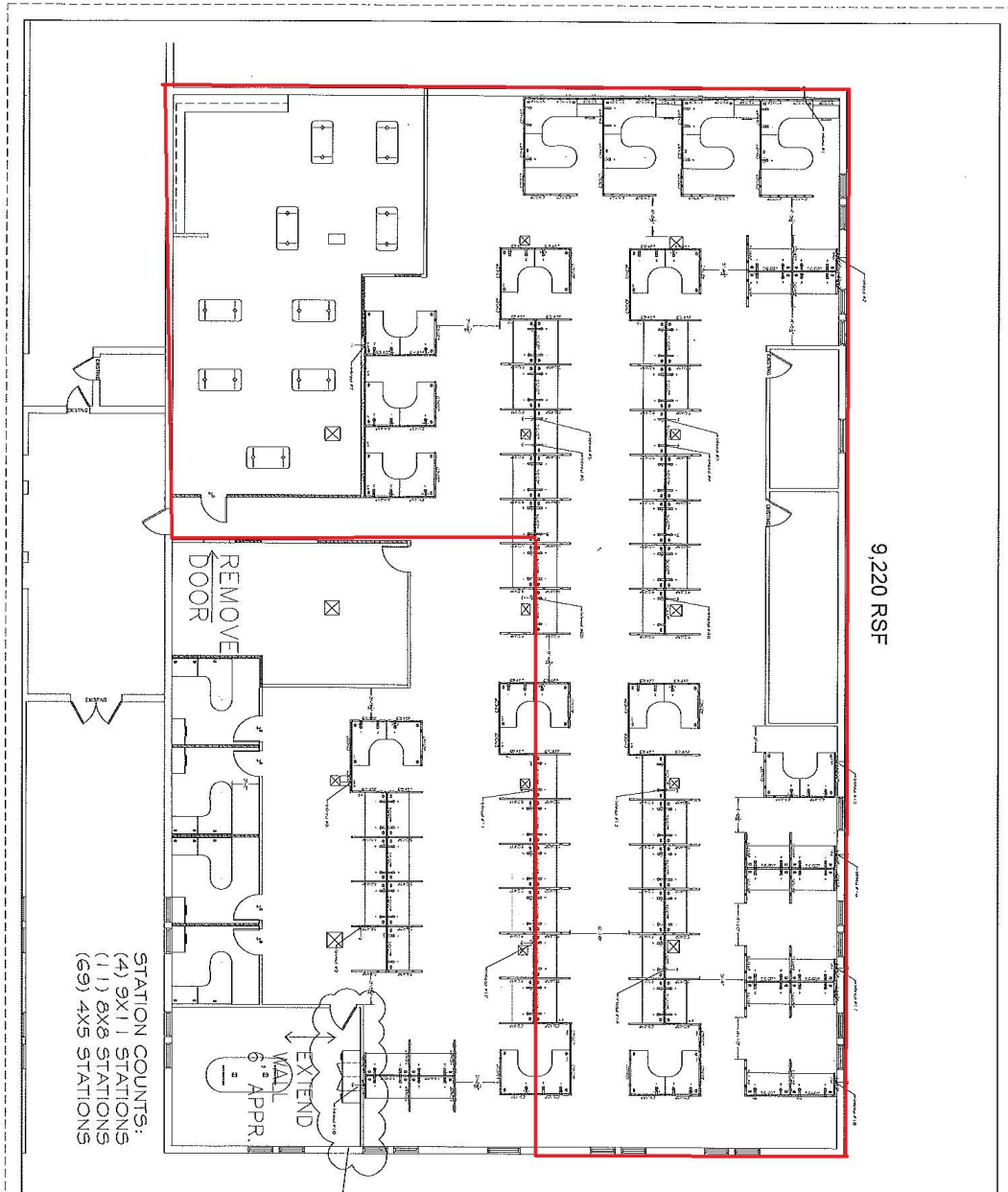
Besaw & Associates
Realty, Ltd.

Phone: 920-338-8080

Fax: 920-338-8181

Email:

tim@besawrealty.com



1st Floor South

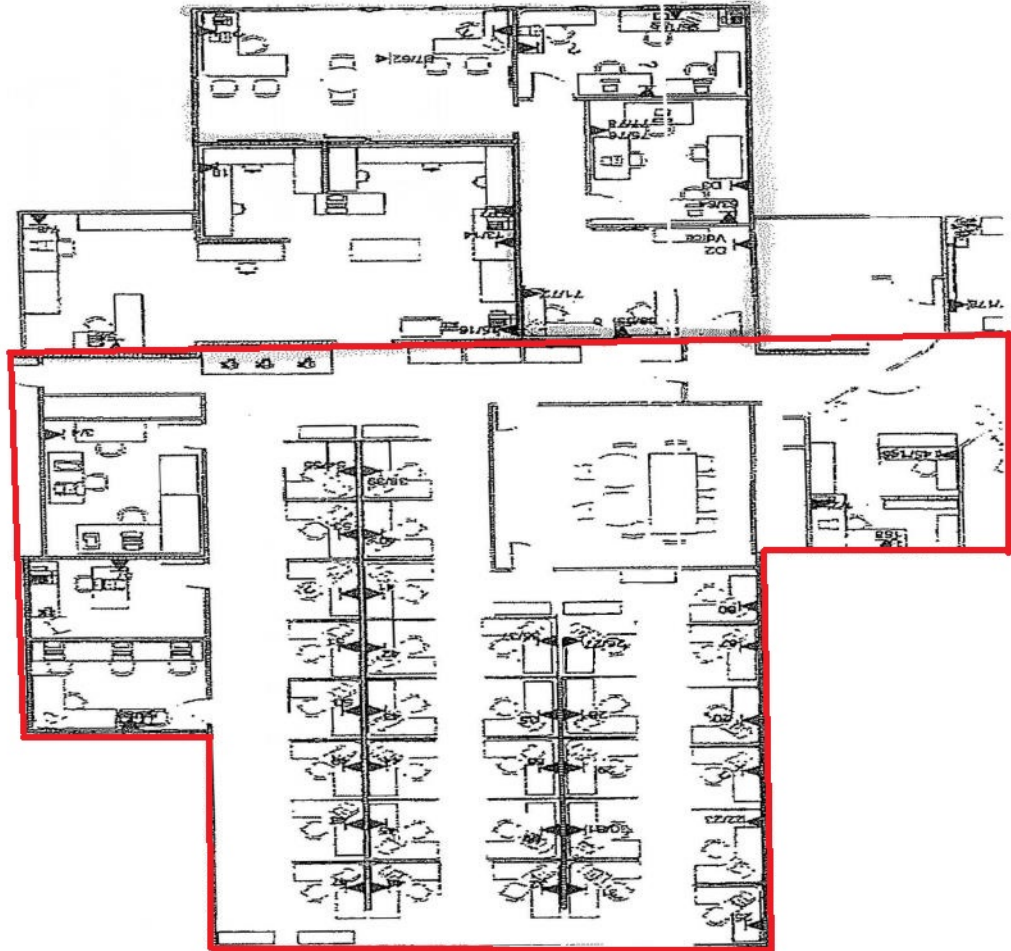
**Besaw & Associates
 Realty, Ltd.**

Phone: 920-338-8080

Fax: 920-338-8181

Email:

tim@besawrealty.com



3rd Floor North

**Besaw & Associates
Realty, Ltd.**

Phone: 920-338-8080

Fax: 920-338-8181

Email:

tim@besawrealty.com