

**Building
FOR
LEASE**

**5,000 Square Feet
FOR LEASE**

**904 S. Taylor Street
Green Bay, WI 54303**

INTEGRITY, PASSION, RESULTS



BE SA W
& ASSOCIATES
REALTY, LTD.



**Besaw & Associates
Realty, Ltd.**

Phone: 920-338-8080

Fax: 920-338-8181

Email:

tim@besawrealty.com

**Building
FOR
LEASE**

904 S. Taylor Street

INTEGRITY, PASSION, RESULTS

5,000 Sq Ft

TABLE OF CONTENTS

Property Information.....3
Property Photos.....4-5
Building Specifications.....6
Surrounding Retail.....7
Plat Map.....8
Aerial View.....9
Floor Plan.....10
Population for 5 Mile Radius.....11
Surrounding Area.....12

**Besaw & Associates
Realty, Ltd.**

Phone: 920-338-8080

Fax: 920-338-8181

Email:

tim@besawrealty.com

904 S. Taylor Street Green Bay, WI 54303

Building FOR LEASE

INTEGRITY, PASSION, RESULTS

PROPERTY INFORMATION

Besaw & Associates Commercial Division is pleased to offer FOR LEASE this prime commercial Office Building at 904 S. Taylor Street in Green Bay. Many options for this office building, ideal use is office space for companies or individuals seeking an ideal location. 5,000 Sq. Ft. available



Property Address	904 S. Taylor Street Green Bay, WI 54304 Brown County
Total Square Footage Available	5,000 Sq Ft On the Main Floor
Lot Size	3.5 Acres
Lease	\$14.00NNN
Municipality	City of Green Bay
Zoning	C-1 General Commercial
Parcel	6H-1081-3

Besaw & Associates
Realty, Ltd.

Phone: 920-338-8080

Fax: 920-338-8181

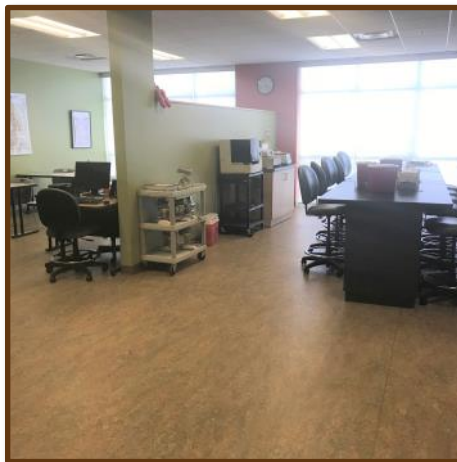
Email:

tim@besawrealty.com

904 S. Taylor St Green Bay, WI 54303

Building Photos

INTEGRITY, PASSION, RESULTS



**Besaw & Associates
Realty, Ltd.**

Phone: 920-338-8080

Fax: 920-338-8181

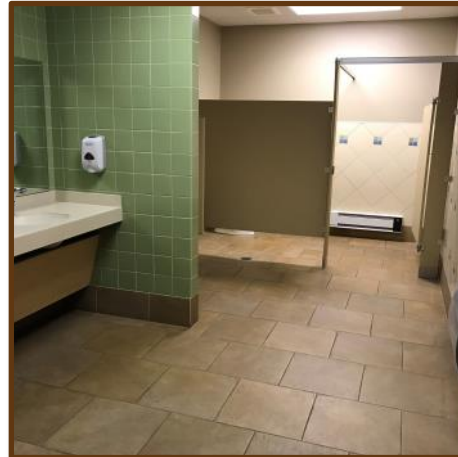
Email:

tim@besawrealty.com

904 S. Taylor Street Green Bay, WI 54304

Building Photos

INTEGRITY, PASSION, RESULTS



**Besaw & Associates
Realty, Ltd.**

Phone: 920-338-8080

Fax: 920-338-8181

Email:

tim@besawrealty.com

BUILDING TYPE	OFFICE/RETAIL
YEAR BUILT	1995
CEILING HEIGHT	12 FEET
EXTERIOR CONSTRUCTION	MASONARY
PARKING SPOTS	ON SITE
SPRINKLER SYSTEM	FULLY
HEAT	GFA/ZONED
HOT WATER	YES
AIR CONDITIONING	YES/ZONED
RESTROOM'S	4
SECURITY SYSTEM	FULL/KEY FAB
VISIBILITY	HWY 141
CURRENT TENANT	RASMUSSEN COLLEGE IN 20,000 Sq. Ft.

**Besaw & Associates
Realty, Ltd.**

Phone: 920-338-8080

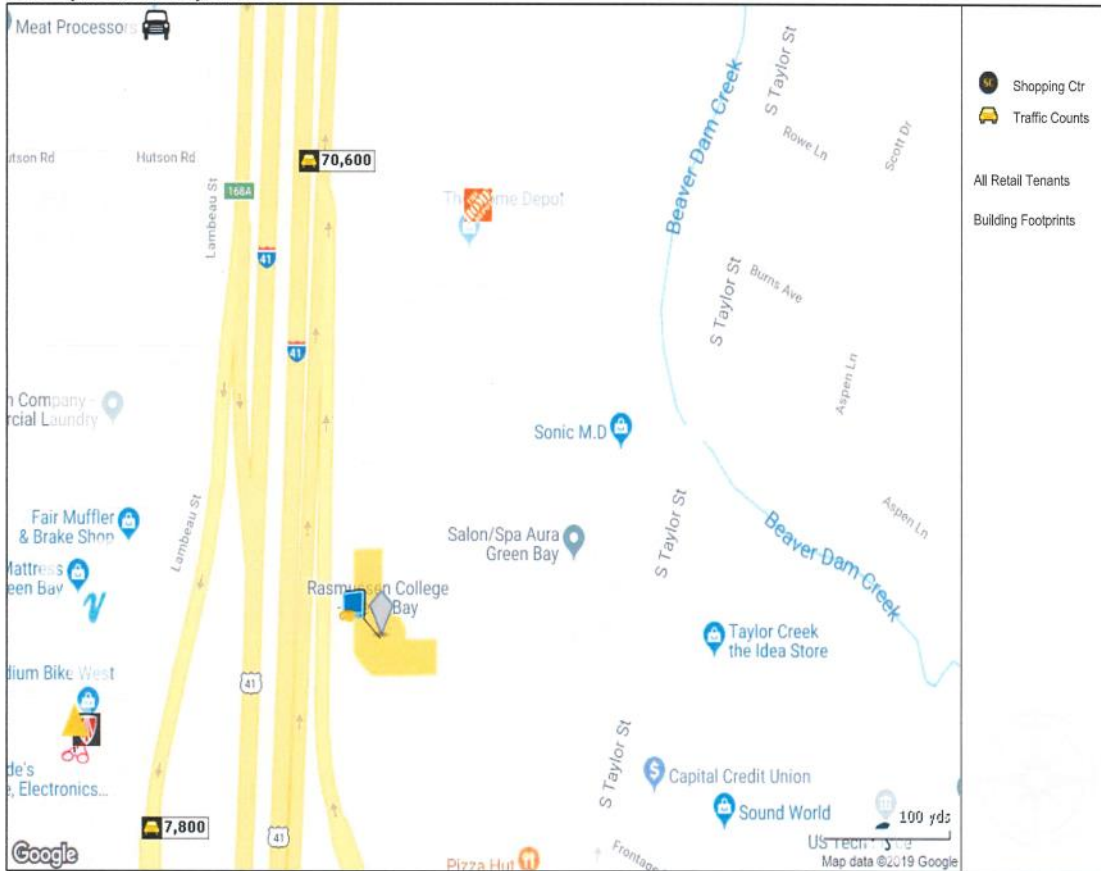
Fax: 920-338-8181

Email:

tim@besawrealty.com

904 S Taylor

904 S Taylor St, Green Bay, WI 54303



Copyrighted report licensed to Besaw & Associates Realty Ltd - 387362.
 Logos are displayed to depict store locations only and are the property of their respective owners

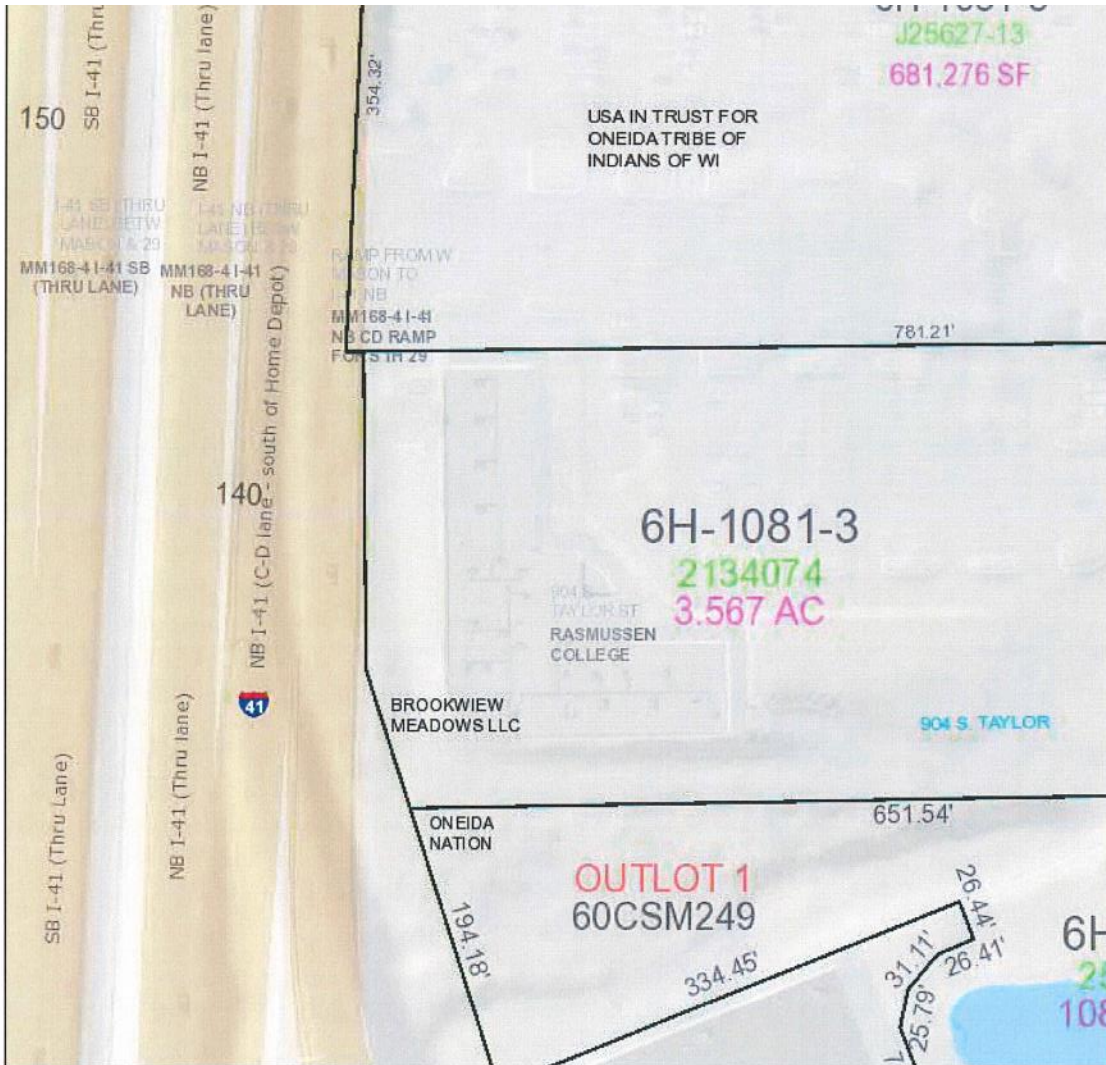
**Besaw & Associates
 Realty, Ltd.**

Phone: 920-338-8080

Fax: 920-338-8181

Email:

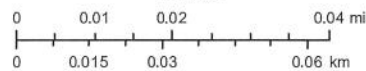
tim@besawrealty.com



3/19/2019, 2:17:26 PM

1:1,200

- TaxParcel**
- TaxParcel
 - Condominium
 - Gap; Overlap
 - Hydrography
 - Right of Way
 - Undetermined



Brown County Municipalities
 Brown County
 Brown County WI

Brown County WI
www.gis.co.brown.wi.us

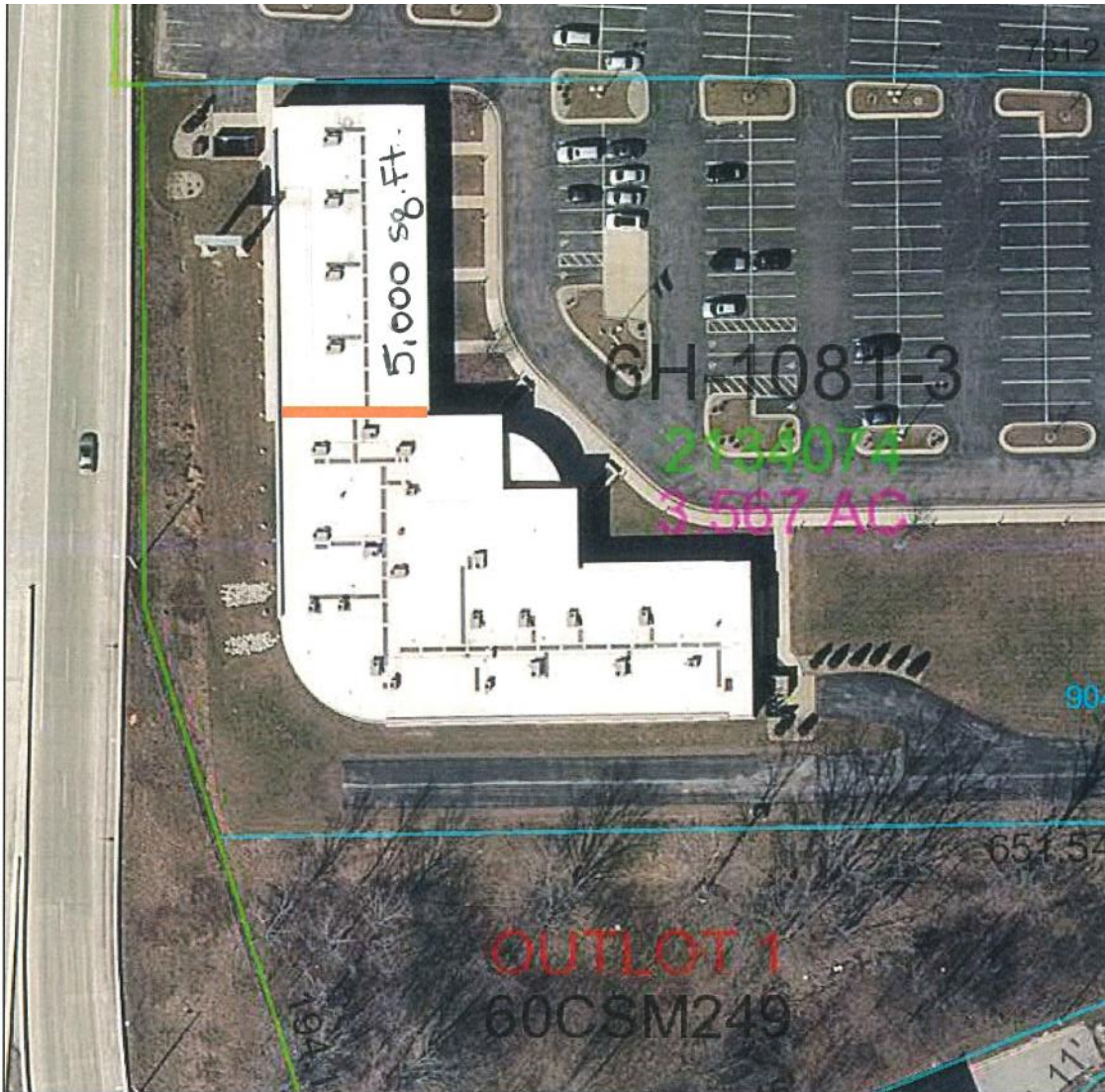
Besaw & Associates
Realty, Ltd.

Phone: 920-338-8080

Fax: 920-338-8181

Email:

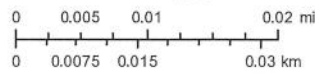
tim@besawrealty.com



4/4/2019, 3:38:34 PM

1:720

- | | |
|-------------------|---|
| ParcelLine | -- Lines between deeds or lots (20dashed) |
| Undetermined | - - Meander line |
| Right of Way line | Hydrography |
| Plat boundary | PLSS line |
| Block boundary | Historic Parcel Line (20under) |
| Lot boundary | Vacated Right of Way |
| Parcel line | Original Right of Way |



Brown County Municipalities
 Brown County
 Brown County WI

Brown County WI
www.gis.co.brown.wi.us

**Besaw & Associates
 Realty, Ltd.**

Phone: 920-338-8080

Fax: 920-338-8181

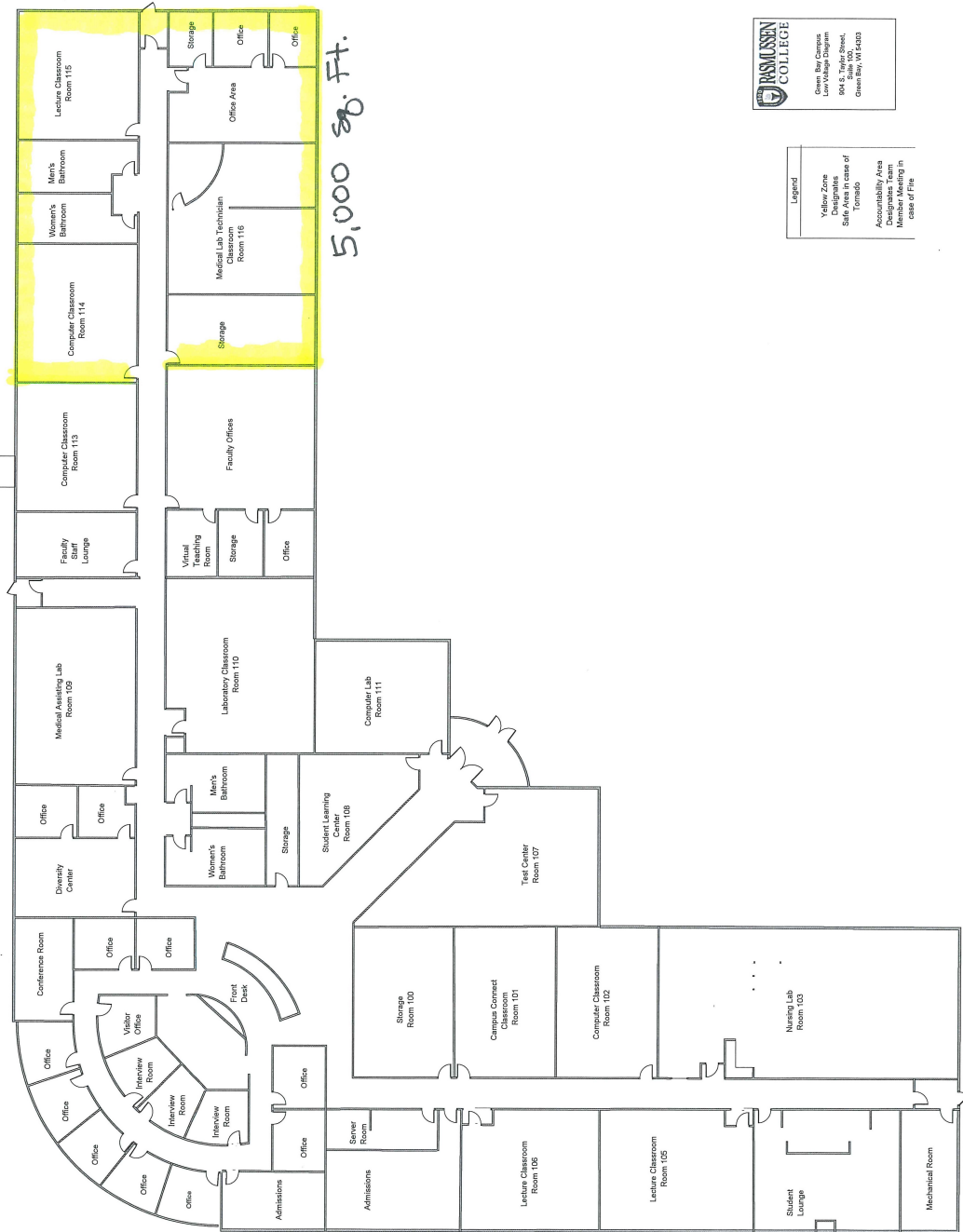
Email:

tim@besawrealty.com

Floor Plan



**BESAW
& ASSOCIATES
REALTY, LTD.**



Legend	
Green Bay Campus	Yellow Zone
Designated	Designates
Safe Area in case of	Fire
Accountability Area	Designates Team
Designating Team	Responsible in
Case of Fire	

Revised By: Chris Alexander

Author: Ed Brunke

Description: Greenbay Campus – Building Layout

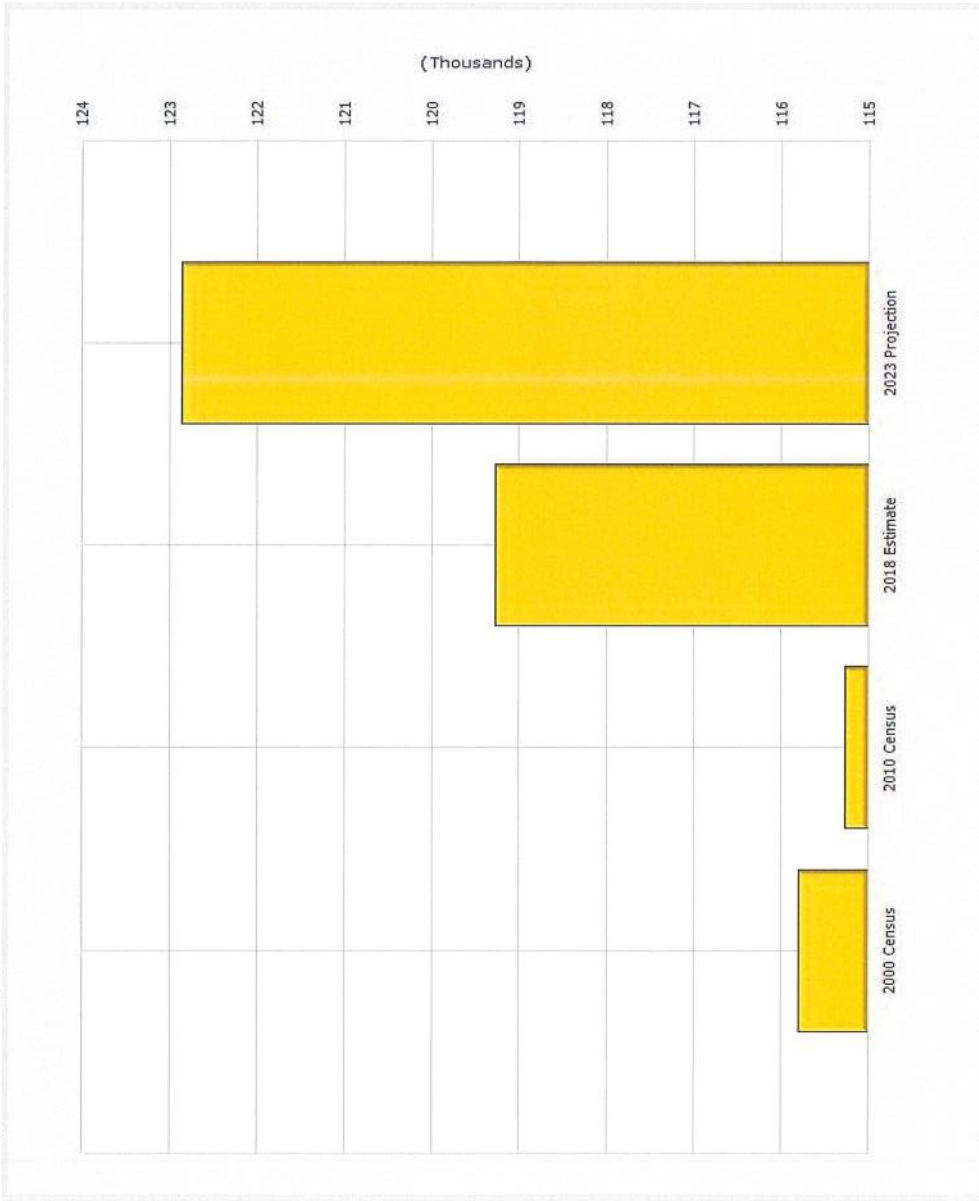


**Besaw & Associates
Realty, Ltd.**
Phone: 920-338-8080
Fax: 920-338-8181
Email:
tim@besawrealty.com

Population for 5 Mile Radius

904 S. TAYLOR STREET

Population for 5 Mile Radius
 904 S Taylor St, Green Bay, WI 54303



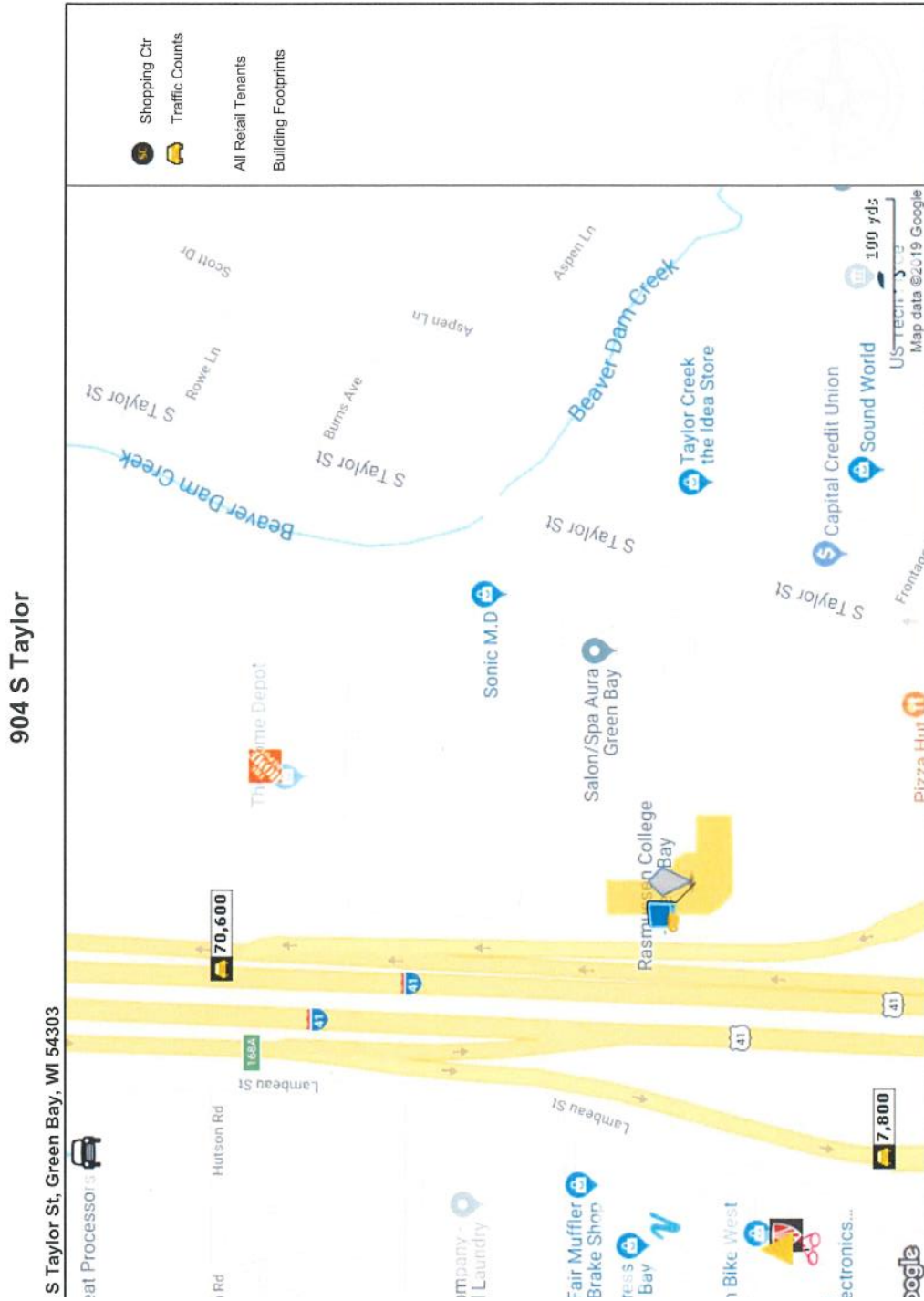
**Besaw & Associates
 Realty, Ltd.**

Phone: 920-338-8080

Fax: 920-338-8181

Email:

tim@besawrealty.com



Copyrighted report licensed to Besaw & Associates Realty Ltd. - 387362.
 Logos are displayed to depict store locations only and are the property of their respective owners

**Besaw & Associates
 Realty, Ltd.**
 Phone: 920-338-8080
 Fax: 920-338-8181
 Email:
 tim@besawrealty.com



**Besaw & Associates
Realty, Ltd.**

Phone: 920-338-8080

Fax: 920-338-8181

Email:

tim@besawrealty.com