

FOR LEASE



Suite 240

**Suite 250, 260
and 265**

**Suite
280**

2593 Development Drive | Green Bay,
Suite 250, 260, 265 | WI

6,683 Sq. Ft. available • Prime Retail Area • \$19.50 Sq. Ft. NNN

Besaw Properties LTD is pleased to offer FOR LEASE this prime commercial Medical Suite at 2593 Development Drive in the Village of Bellevue. Currently built out for Lindgren Functional Medicine. Come join Strategic Underwriting Solutions, and Ovation Hand Institute in this great location.

- **6,683 Square Foot Suite**
- **Shell only, white-box finish**
- **Build to suit**
- **Hwy-172 Frontage**
- **Strong neighboring businesses with long term clientele enhancing visibility.**
- **Easily accessible via WI-172 and Cty Rd GV.**

BESAW
PROPERTIES LTD

Commercial Property Services

Phone: **920-338-8080**

Fax: 920-338-8181

Email: **tim@besawrealty.com**

All information contained herein is from sources deemed reliable and is submitted subject to errors, omissions and to change of price or terms without notice.



Prime Commercial Office FOR LEASE

Ideal use is office/medical space for companies or individuals at an ideal location in the Village of Bellevue.

Besaw Properties LTD is pleased to offer, for lease, this prime commercial office/medical building at 2593 Development Drive. Easily accessible from WI-172 and Cty Rd GV. Space is shell only, white-box finish. Owner will build to suit. Options available to divide or add space up to 12,000 contiguous square feet.



PROPERTY INFORMATION

Property Address:

2593 Development Drive,
Suite 250, 260, 265
Green Bay, WI 54311
Brown County

**Total Square Footage
Available for Lease:**
6.683 Square Feet

Lease Price **\$19.50 Sq. Ft. NNN**

Municipality **Village of Bellevue**

Zoning **Commercial**



BUILDING INFORMATION

Building Type:

Office//Retail//Medical

Year Built:

2006

Exterior Construction..... **Brick/Block**

Parking Spots..... **On-site**

Heat..... **Rooftop/GFA**

Hot Water..... **Yes**

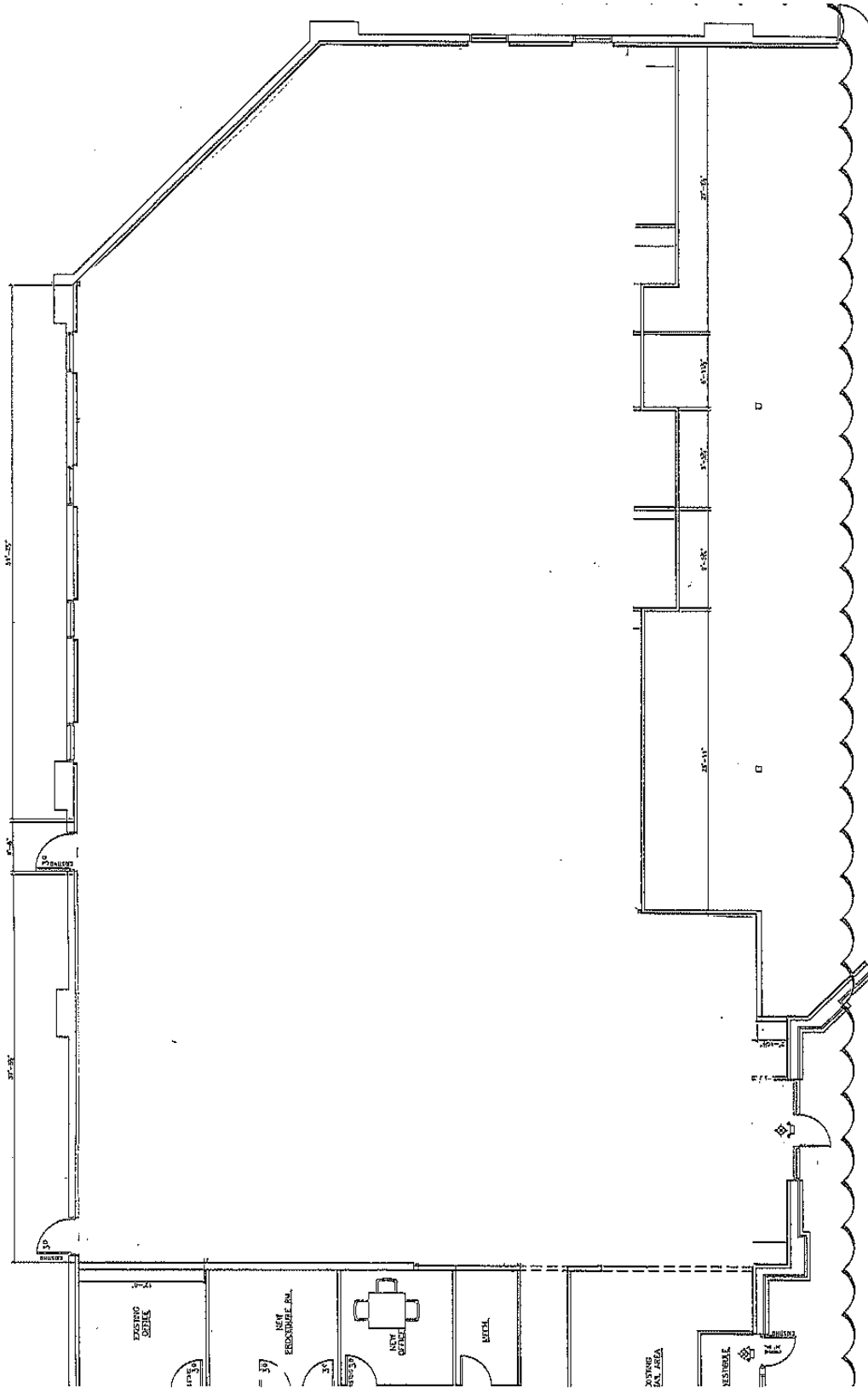
Air Conditioning..... **Yes**

Visibility..... **Excellent**

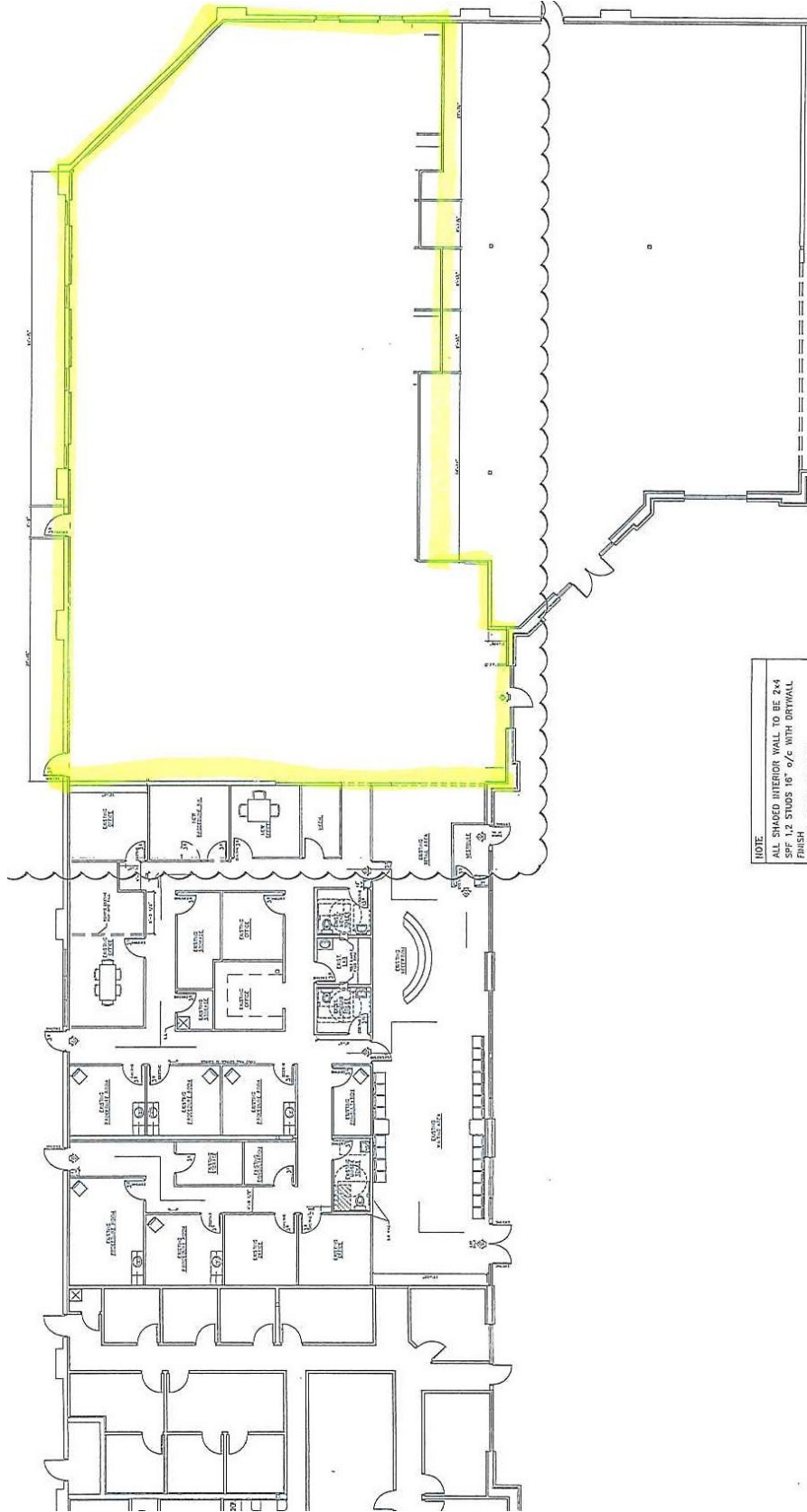
Current Tenants..... **Strategic Underwriting Solutions, Ovation
Hand Institute**



2593 Development Drive | Floor Plans



2593 Development Drive | Floor Plans



2593 Development Drive | Floor Plans

