

# FOR LEASE



## 1088 Springhurst Drive | Green Bay



**\$14.00/ Sq. Ft. NNN • Class A Office • 32,000 Sq. Ft. Building**

Besaw Properties LTD is pleased to offer FOR LEASE this prime commercial Class A Office Building at 1088 Springhurst Drive in Green Bay. Recently updated with open concept with perimeter offices, large conference rooms, large breakroom, , large perimeter windows on a private wooded ravine lot, multiple key fob entrances, large secured IT rooms, fiber optic, outdoor patio. Space can be divided. All desks/workstations and furniture available. City bus stop out front. Professionally managed by Besaw Properties Ltd.

- **Easy access to Hwy-172 and Hwy-41**
- **Great location, located just minutes from Lambeau Field, Austin Straubel Airport and Bay Park Square Mall.**
- **Updated Open Concept**
- **Space can be divided**

**BESAW**  
**PROPERTIES LTD**

**Commercial Property Services**

Phone: **920-338-8080**

Fax: 920-338-8181

Email: **tim@besawrealty.com**

All information contained herein is from sources deemed reliable and is submitted subject to errors, omissions and to change of price or terms without notice.



## Prime Commercial Office FOR LEASE

Ideal use is office space for companies or individuals at an ideal location Green Bay.

Class A Executive office space recently updated open concept with perimeter offices, large conference rooms, large breakroom, large perimeter windows on a private wooded ravine lot and an outdoor patio. Fully furnished, multiple key fob entrances, large secured IT room and fiber optic.

Properties, Ltd. There is a city bus stop right out front.

All furniture, desks/workstations are available.

Professionally managed by Besaw



### PROPERTY INFORMATION

**Property Address:**

1088 Springhurst Drive  
Green Bay, WI 54304  
Brown County

**Total Square Footage**

**Available for Lease:**  
32,000 Square Feet

Lot Size ..... **1.289 Acres**

Lease Price (All-inclusive)..... **\$14.00 sq. ft. NNN**

Municipality ..... **Village of Ashwaubenon**

Zoning..... **Commercial**

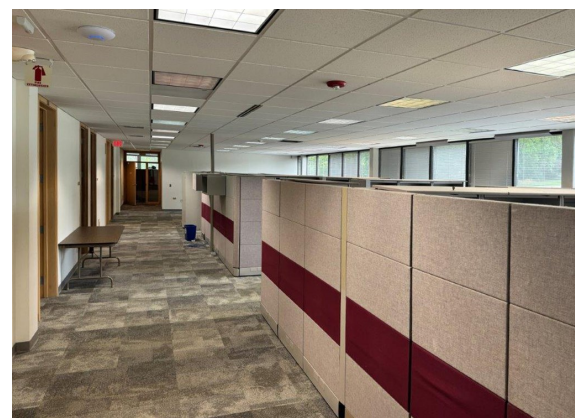
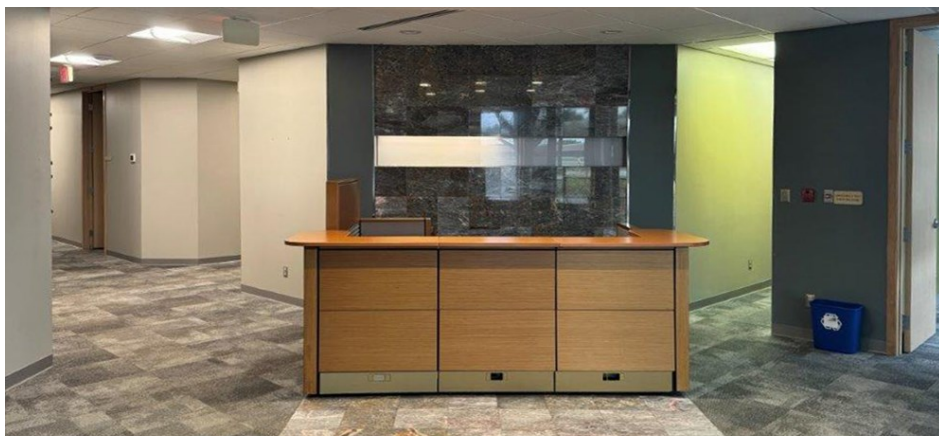
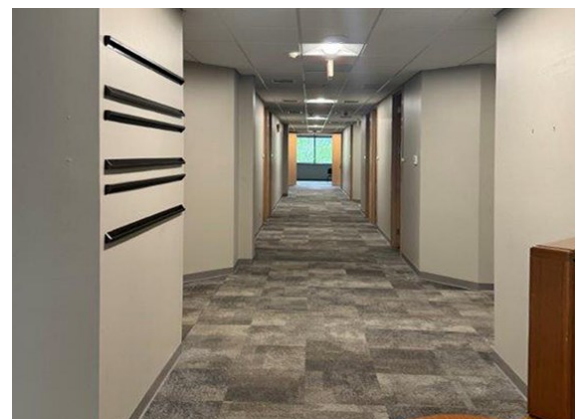
Parcels and 2022 Taxes ..... **VA-158-3/\$34,071**



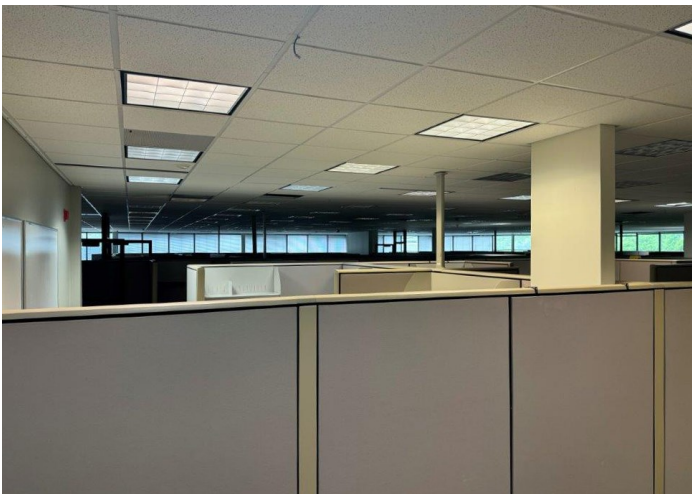
## BUILDING INFORMATION

---

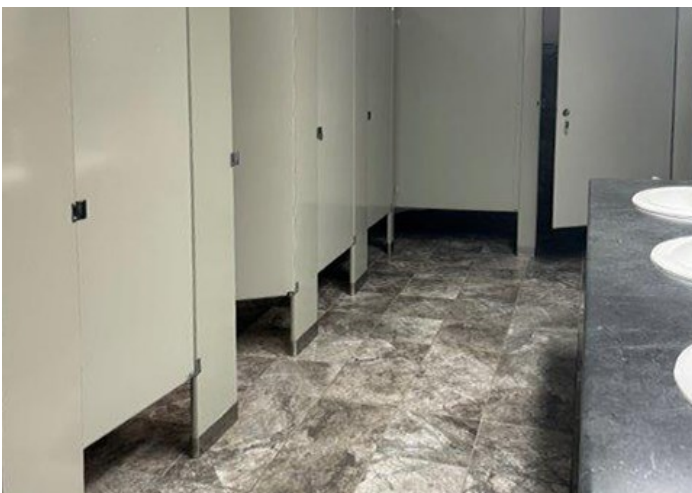
<b>Building Type:</b>	<b>Year Built:</b>
Office/Commercial	1985
Exterior Construction.....	<b>Concrete/Glass/Precast</b>
Parking Spots.....	<b>210/on-site</b>
Sprinkler System.....	<b>Fully</b>
Heat.....	<b>Gas</b>
Hot Water.....	<b>Yes</b>
Air Conditioning.....	<b>Yes</b>
Restrooms.....	<b>6</b>
Security System.....	<b>Yes</b>
Visibility.....	<b>Excellent</b>



# 1088 Springhurst Drive | Property Photos



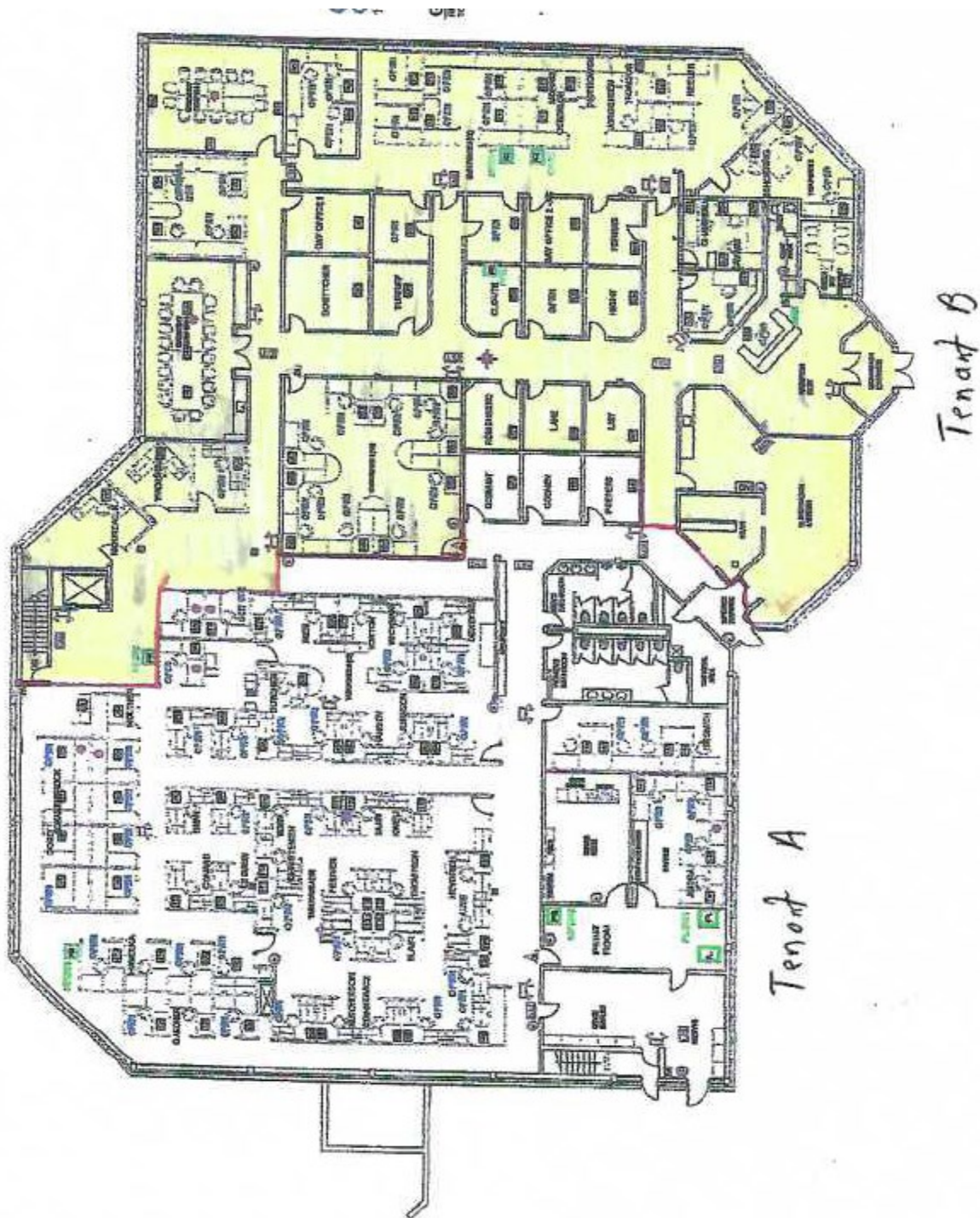
# 1088 Springhurst Drive | Property Photos



# 1088 Springhurst Drive | Property Photos



# 1088 Springhurst Drive | Floor Plans - Main Floor



# 1088 Springhurst Drive | Plat Map



## FOR MORE INFORMATION

Contact **Tim J. Besaw** Phone: **920-338-8080** | Fax: 920-338-8181

Email: [tim@besawrealty.com](mailto:tim@besawrealty.com) | Online: [www.BesawRealty.com](http://www.BesawRealty.com)