

FOR SALE



2985 S. Ridge Road | Ashwaubenon Industrial Park



51,722 Sq. Ft. Building • 6.88 Acres • Ashwaubenon, WI • \$3,500,000

Besaw Properties Ltd is pleased to offer FOR SALE this Class B Office Building at 2985 S. Ridge Rd in Ashwaubenon, WI. Many options for this office building, ideal use is office space for companies or individuals seeking an ideal location. Floor plans are attached.

- Almost a full block, park-like setting.
- Easy access to I-41 and WI-172.
- Near Austin Straubel International Airport, Bay Park Square Mall and Lambeau Field
- Central Elevator and common bathrooms
- Includes 2,000 sq. ft. heated detached garage and secured fenced parking for 20 vehicles
- Most spaces updated to open space with perimeter offices, reception area, break rooms, IT room

BESAW
PROPERTIES LTD

Commercial Property Services

Phone: **920-338-8080**

Fax: 920-338-8181

Email: **tim@besawrealty.com**

All information contained herein is from sources deemed reliable and is submitted subject to errors, omissions and to change of price or terms without notice.



Prime Commercial Office FOR Sale

Ideal use is office space for companies or individuals at an ideal location in Ashwaubenon.

Besaw Properties Ltd is pleased to offer FOR SALE this Class B Office Building at 2985 S. Ridge Rd in Ashwaubenon, WI. Almost a full block with park-like setting. Offering 5,000 sq. ft. to entire building. Multiple entrances to easily divide for individual suites with Fab entry. Central elevator and common bathrooms. Also has a loading dock and overhead entry door. Ideally set up for multiple tenants. Most spaces updated to open space with perimeter offices and reception area, break rooms and IT rooms. Flex spaces available, 2,000 sq. ft. detached heated garage and secured fenced parking for 20 vehicles. Located near Austin Straubel International Airport,

Bay Park Square Mall and Laumbeau Field. Easy access to I-41 and WI-172.



PROPERTY INFORMATION

Property Address:
2985 S. Ridge Rd.
Green Bay, WI 54304
Brown County

Total Building Square Footage:
51,722 Square Feet

Lot Size..... **6.88 Acres**

Sale Price **\$3,500,000**

Municipality..... **Village of Ashwaubenon**

Zoning **Commercial**

Parcels and 2024 Taxes **VA-228-14-K-71/\$41,496**



BUILDING INFORMATION

Building Type:

Office/build to suit

Year Built:

1979/remodeled in 2002/2019

Exterior Construction..... **Stucco/Steel**Parking Spots **468/on-site**Sprinkler System..... **Fully**Heat..... **Natural Gas**Hot Water **Yes**Air Conditioning..... **Yes/Multi**Security System **Key Fob**Elevators..... **1**Visibility **Business Park**Current Tenants..... **Vacant**

2985 S. Ridge Road | Property Photos



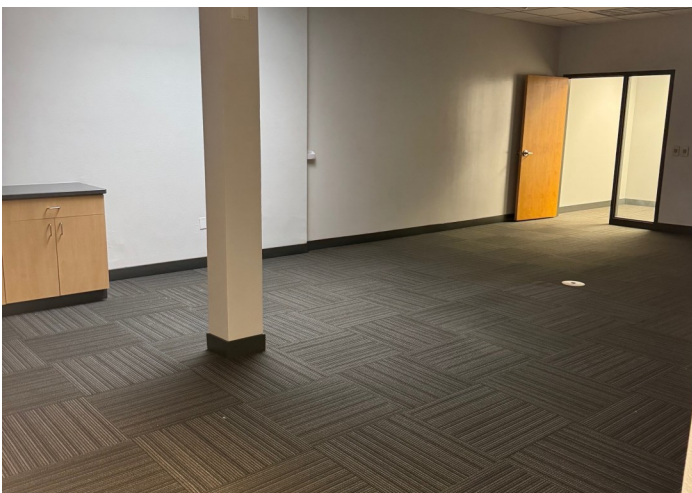
2985 S. Ridge Road | Property Photos



2985 S. Ridge Road | Property Photos

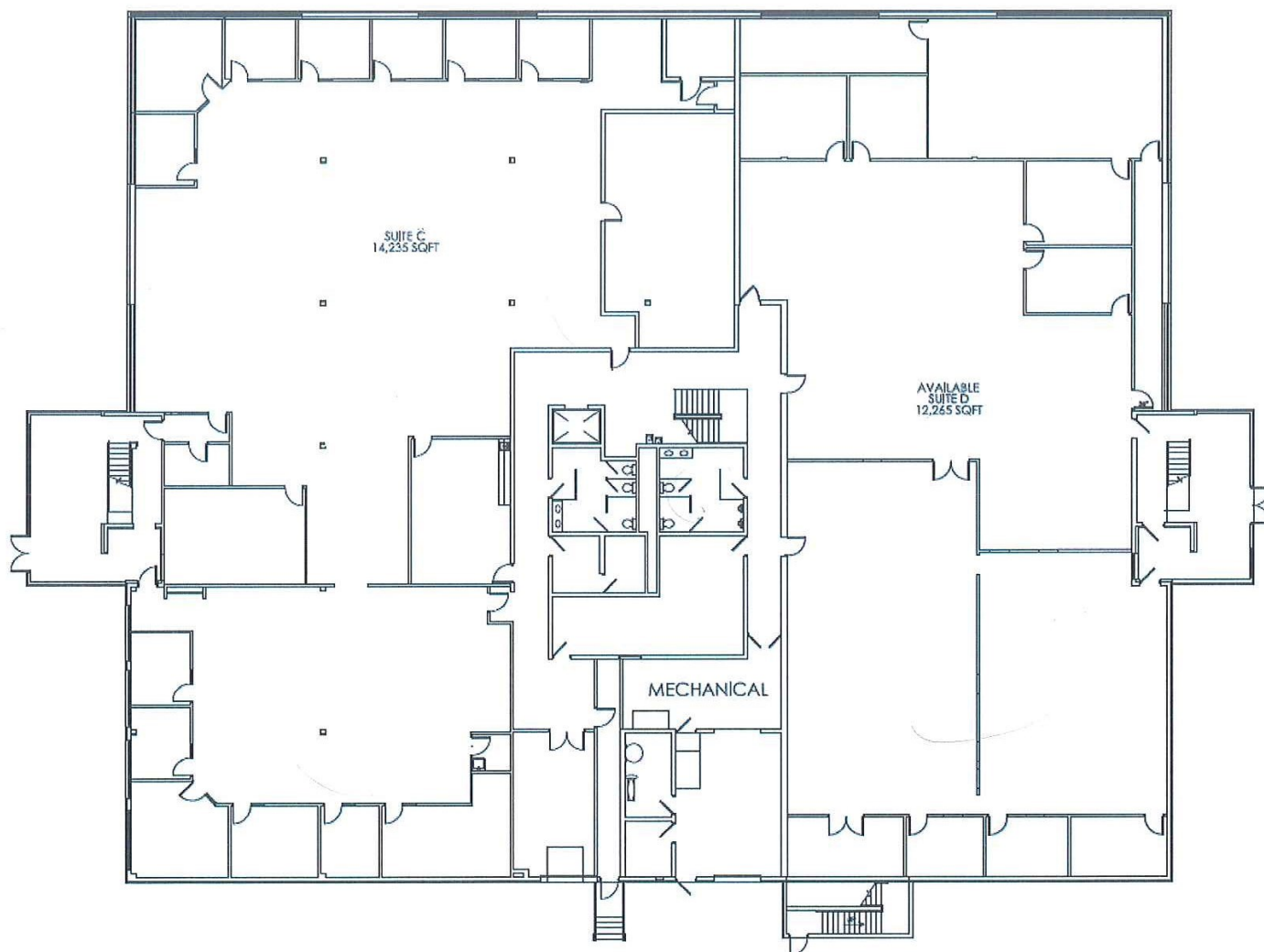


2985 S. Ridge Road | Property Photos





Lower Level 26,500 sq.ft.





2nd Floor 24,340 sq.ft.

